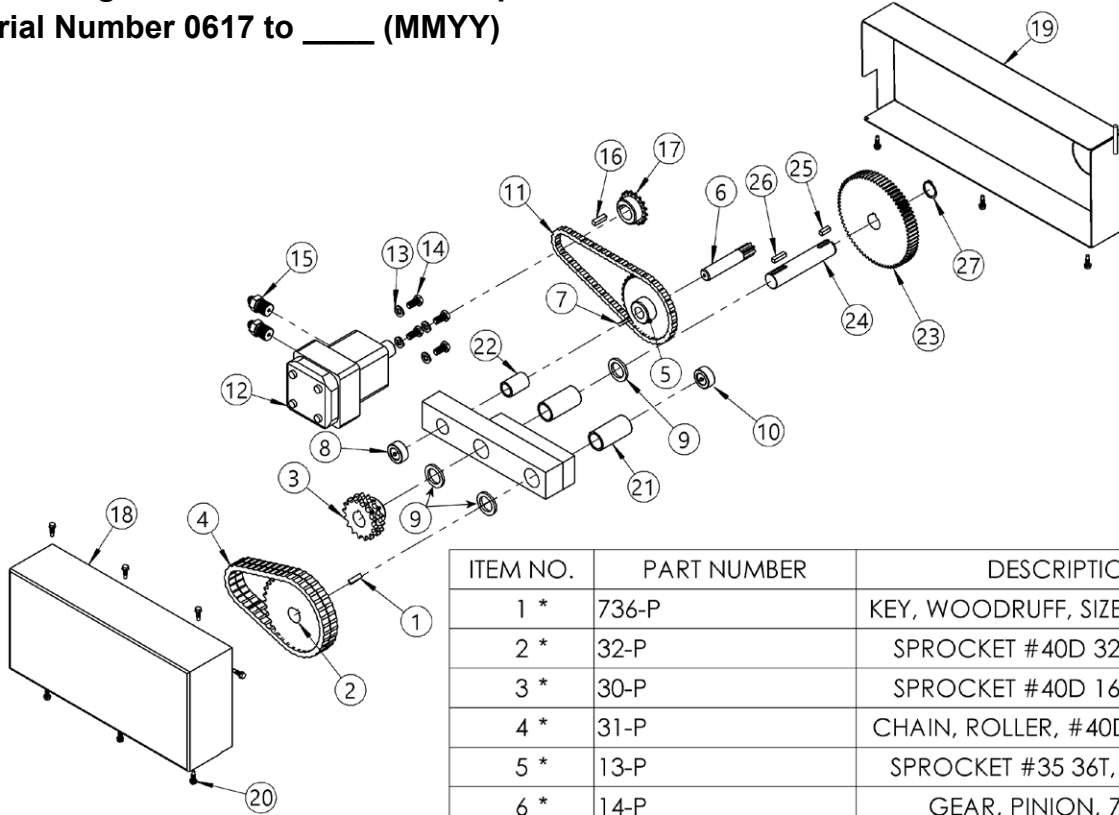


Parts Diagram for Power Train Components
Serial Number 0617 to ____ (MMYY)



ITEM NO.	PART NUMBER	DESCRIPTION	QTY.
1 *	736-P	KEY, WOODRUFF, SIZE 15, ASA808	1
2 *	32-P	SPROCKET #40D 32T, 1" BORE	1
3 *	30-P	SPROCKET #40D 16T, 1" BORE	1
4 *	31-P	CHAIN, ROLLER, #40D W/ M. LINK	1
5 *	13-P	SPROCKET #35 36T, 3/4" BORE	1
6 *	14-P	GEAR, PINION, 7 TOOTH	1
7 *	735-P	KEY, WOODRUFF, SIZE 9, ASA606	1
8	15-P	COLLAR, 3/4" ID	1
9	29-P	SPACER, SPUR GEAR .15"	3
10	16-P	COLLAR, 1" ID	1
11 *	12-P	CHAIN, ROLLER, #35 W/ M LINK	1
12	351-P	MOTOR, HYDRAULIC HYD, 400, 456	1
13	1474-P	WASHER, 3/8 SPLIT LOCK	4
14	1657-P	HHCS, 3/8-16 X 3/4 GR2	4
15	2120-P	HYD FIT, MALE CONNECTOR, 400	2
16	2656-P	KEY, SQUARE, 1/4 X 1"	1
17 *	1116-P	SPROCKET #35 17T, 1" BORE	1
18	1755-P	COVER HALF SQ, NO HOLES 400 PT	1
19	1772-P	COVER HALF SQ, 1 HOLE, 400 PT	1
20 *	193-P	SCREW, TEK, 12-14 X 3/4 3 PT	10
21 *	18-P	BEARING, 1" ID X 2-1/2"	2
22 *	7-P	BEARING, 3/4" ID X 1-1/2"	1
23 *	5978-P	GEAR, SPUR, 72T, 1" BORE KEY	1
24 *	5104-P	SHAFT, SPUR GEAR, 2 KEYWAY	1
25 *	6004-P	KEY, 1/4" X 3/4", SPUR GEAR	1
26 *	6005-P	KEY, 1/4" X 1", SPUR GEAR	1
27 *	6003-P	SNAP RING, 1" SPUR GEAR	1

* Recommended spare parts