

Model 184



Model 184
Adjusts to fit
8" to 15" (20.3 to 38.1 cm)
diameter containers

Adjust to Various Diameter Drums

Two Models Cover a Wide Range of Diameters

- Unique pads conform to drum for a secure grip
- Transport loaded drum by crane, hoist or chain block
- Allows fast dispensing of your drum
- High level controlled pouring

Morse Adjusto-Karriers provide a convenient means of pouring into high chutes, hoppers, vessels, etc. They are adjustable to fit a specified range of diameters for handling fiber or steel drums (with or without ribs) weighing up to 500 Lb. (227 kg). A hand operated pull chain permits gear driven tilt control for pouring above a person's reach. The 30:1 gears are equipped with safety covers.

To attach your Adjusto-KARRIER to a drum, simply back-off the adjusting screws using the removable crank furnished. The center rod of the three rods on each side is a threaded adjusting screw. The others are guide rods (shown in dimensions diagram). Hoist the unit up over the drum and lower it to a point where the gripping pads are adjacent to the center of the load. Turn the adjusting screws to tighten the grip pads to hold the drum approximately centered in the holder frame. Turning the adjusting crank allows the operator to "feel" the resistance of the pressure being applied, so denting or crushing the container can be prevented.

Model 186



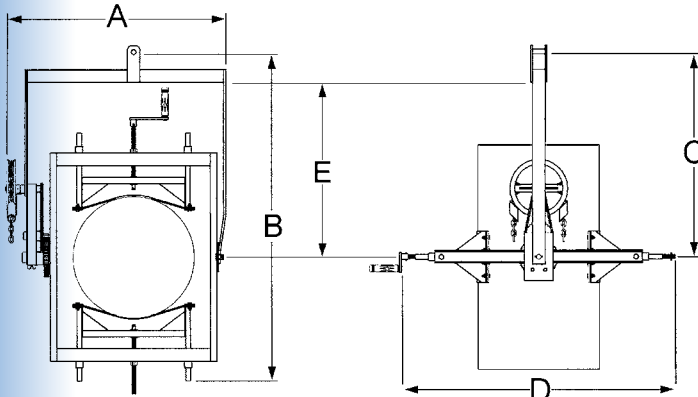
Model 186
Adjusts to fit
15" to 23" (38.1 to 58.4 cm)
diameter containers

The unique grip pads, made of a nylon core with nitrile blend cover, conform to the drum curvature to grip securely.

When successive drums are the same diameter, gripping and releasing involves just one adjusting screw. The other one need not be readjusted until a different diameter is encountered. Then it may be readjusted to center the new drum.

Morse Adjusto-Karriers ship assembled in a carton.
Ship dimensions: L48" W36" H8" (122 x 92 x 20 cm)
Ship weight is approximately 120 Lb. (55 kg).

Dimensions



	184	186
Handles	8" to 15" Diameter (20.3 to 38.1 cm)	15" to 23" Diameter (38.1 to 58.4 cm)
Dimension A	26.5" (67.3 cm)	34.375" (87.3 cm)
Dimension B	56.375" (143.2 cm)	48.125" (122.2 cm)
Dimension C	40.75" (103.5 cm)	28.75" (73 cm)
Dimension D	Drum diameter + 23.5" (56.7 cm)	Drum diameter + 20" (50.8 cm)
Dimension E		24.5" (62.2 cm)

Tilt Control Options

Standard tilt control is a chain wheel and a 12' (366 cm) pull-chain loop with 6' (183 cm) drop for high level pouring.

- Option X01-186 Hand crank and MORStop Tilt-Brake
- Option X02-186 Hand crank
- Option X03-186 16" Hand wheel

Please contact your Morse dealer