

### Extra Heavy-Duty Kontrol-Karrier

#### Extra Heavy-Duty Kontrol-Karrier - 2,000 Lb. (907 kg) Capacity

- 360° drum tilt control in both directions
- Hand operated geared tilt with fully enclosed gear box
- Quick, sure below-hook drum handling by one person
- Save time, reduce waste, improve productivity
- Controlled high-level pouring

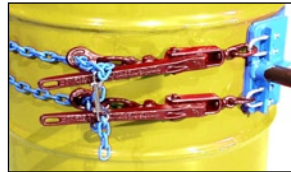
MADE  
IN  
USA

Manual drum tilt is controlled with a 12' (3.66 m) pull chain loop hanging 6' (1.83 m) below the chain wheel. There is enough resistance in the enclosed gear box to automatically stop and hold the drum tilt angle. Hand wheel tilt control option is also available.

Extra-heavy-duty construction with steel tube framework, large shafts and bearings offer long life in tough service. An oil filled, worm gear speed reducer provides 60:1 gear reduction for fine control when tipping heavy drums.

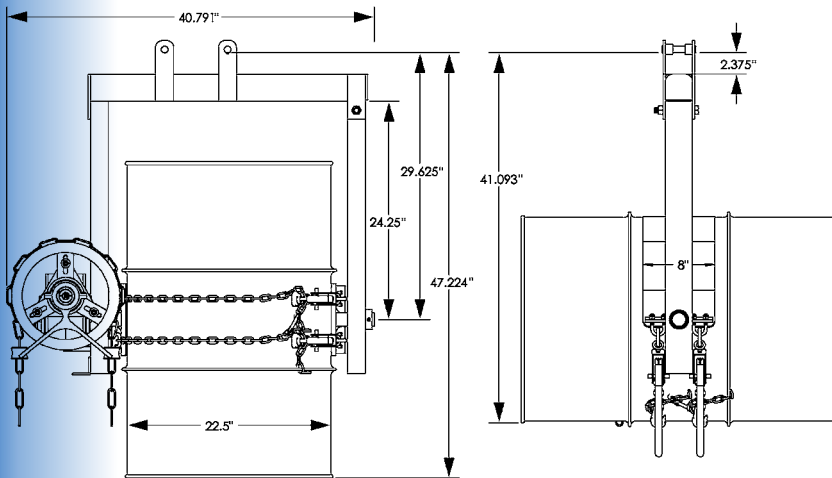
Full Drum Capacity 2,000 Lb. (907 kg)  
Half-full\* drum capacity 1,000 Lb. (454 kg)

The drum holder of Model 185A-GR has an 8" wide metal band and two load binders to secure your 22.5" (57.2 cm) diameter steel drum.



Model 185A-GR

#### Dimensions



NOTE: Standard loop of pull chain extends approximately 6 feet (1.83 m) below the chain wheel. Custom lengths are available.

\* Half-full rating is an indication of capacity for tilting an unbalanced, bottom-heavy drum. A partially full drum with unbalanced and shifting load is harder to tilt than a full drum.

#### Steps to use Extra Heavy-Duty Kontrol-Karriers

1. Attach to your hoist hook using off-center lifting point so empty Kontrol-Karrier will hang plumb. Lift and move the Kontrol-Karrier to your upright drum.
2. Mate the Kontrol-Karrier's drum holder to the middle of your drum and secure your drum between drum ribs... no tools are needed.
3. Place the hoist hook in the lifting point above the drum center to lift Kontrol-Karrier with your secured drum.
4. Pull down one side of the chain loop while letting out the other to turn your drum. Chain loop provides control of drum tilt 360° in either direction, even while drum is hoisted above your reach.

#### Options and Accessories

- **Option X03-185GR** - 10" (25.4 cm) Hand Wheel with speed handle. Replaces the standard chain wheel with hand wheel to turn the drum.
- **Model 55/30-19GR** Diameter Adaptor. Simply insert this Diameter Adaptor into the drum holder to handle your 19" (48.3 cm) diameter 30-gallon (114 liter) steel drum (image on side 2). Remove the Adaptor to handle your 55-gallon (208 liter) steel drum. Quickly and easily install this Diameter Adaptor in the drum holder. Then simply lift it back out to go back to handling a 55-gallon (208 liter) steel drum.
- **Option 461-P Counter Weight** to keep your Extra Heavy-Duty Kontrol-Karrier level, with or without a drum in the holder.



Model #	Description	19" (48.3 cm) Adaptor	Unit Wt.	Ship Wt.	Ship Dimensions	Ship Class
185A-GR	Extra-Heavy-Duty Kontrol-Karrier, drum holder with load binders	55/30-19GR	162 Lb. (73 kg)	177 Lb. (80 kg)	L 42" W 42" H 15" (107 x 107 x 38 cm)	77.5