

**Automatically Holds Drum Tilt Position. . . So You Don't Have To**

- **Anti-backdrive device automatically prevents drum from turning out of control, even when drum contents shift from one end to the other**
- **Adds Automatic "Self-Stop and Hold" to drum tilting**
- **Provides even greater ease of use and improved control**
- **Factory installed option on many Morse models with manual tilt**
- **Kit also available for field installation on many Morse manual tilt models**

**What is the MORStop Tilt-Brake?**

When dispensing a heavy drum, especially an unbalanced drum, operators may need to manually lock the pull-chain or crank handle to prevent unwanted drum rotation. The unique MORStop Tilt-Brake mechanism automatically stops and holds the drum tilt angle! It is a simple, compact anti-backdrive device which functions smoothly and quietly in both directions. The MORStop Tilt-Brake option is available on many models in the Morse Drum Karrier Series and also fits any manual tilt product using a Morse style gear block.

Order the MORStop option with new units. It is also quick and simple to install on existing units equipped with hand crank, chain-wheel or hand wheel. Order field installation kit part number 3900-P.

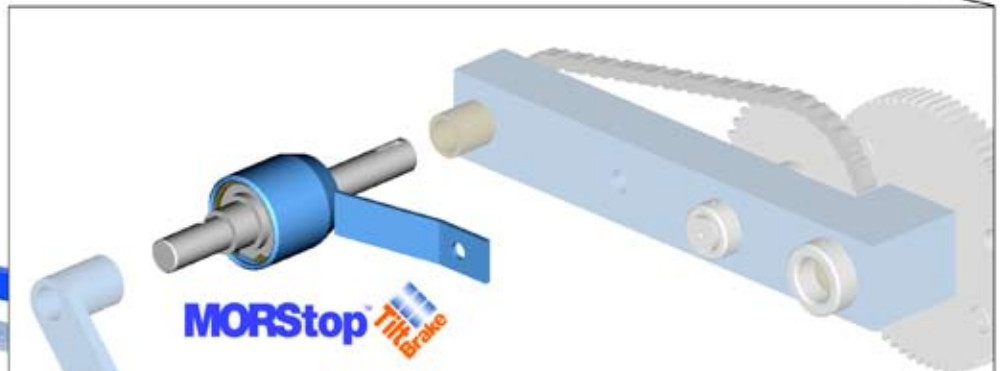
**Advantages and Benefits:**

- Gives the operator unprecedented control and ease of use by holding the drum tilt position constant even when removing tension from the pull-chain or crank handle.
- Eliminates backdrive from heavily loaded, unbalanced drum and prevents drum from tilting due to its own weight-shift
- Braking is **immediate** and self-actuating, without additional steps by the user
- Braking action works in either forward or reverse tilt-direction

MORStop Tilt-Brake on model 400A-60 Hydra-Lift Karrier



MORStop Tilt-Brake on model 285A Forklift-Karrier



**MORStop Tilt-Brake fits:**

**Hydra-Lift Karriers** with hand crank or chain wheel manual tilt control, or with hand wheel option (shown above left on Model 400A-60).

**Forklift-Karriers** with chain wheel tilt control, or with hand crank or hand wheel manual tilt control option (shown left on Model 285A).

**Below Hook Kontrol-Karriers** with chain wheel tilt control, or with hand crank or hand wheel manual tilt control option (shown right on Model 185A).

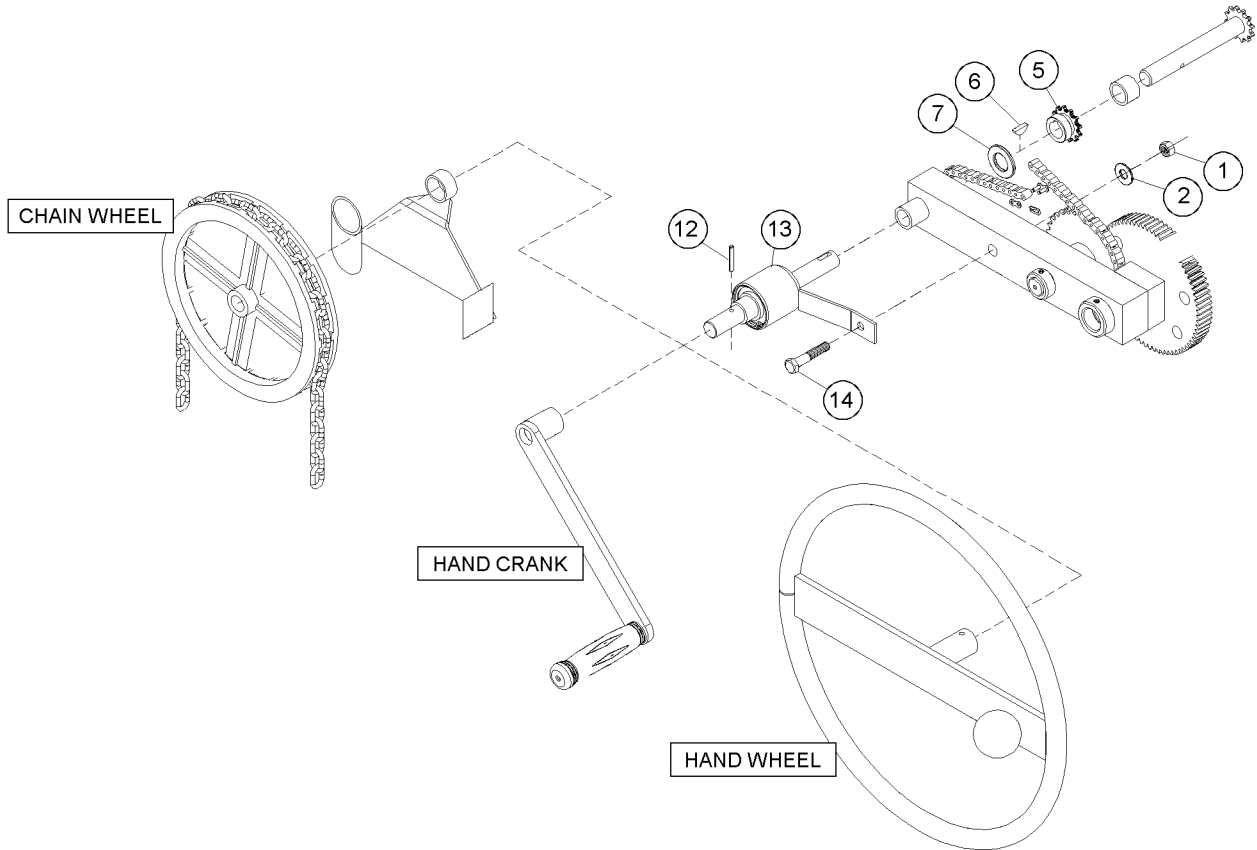


MORStop Tilt-Brake on model 185A Kontrol-Karrier

Any manual tilt product using a Morse style gear block

MADE IN USA

Order MORStop Tilt-Brake with new units as Option # 3900i-P...  
 ...or a kit to install on your existing Morse Karrier as Kit # 3900-P. In-  
 stall on your Morse Karrier with manual drum tilt control - chain wheel,  
 hand crank or hand wheel.



MADE  
IN  
USA

MORStop Tilt-Brake Kit # 3900-P			
Item #	Qty.	Part #	Description
1	1	1169-P	NUT, 3/8-16 REV HEX LOCK
2	1	1166-P	WASHER, 3/8 USS 1" OD
5	1	11-P	SPROCKET, #35 12T, 3/4" BORE
6	1	735-P	KEY, WOODRUFF, SIZE 9, ASA606
7	1	55-P	WASHER, 3/4 SAE FL 1-1/2 OD
12	1	64-P	ROLL PIN, 3/16 X 1-1/4
13	1	3901-P	MORStop TILT-BRAKE
14	1	82-P	HHCS, 3/8-16 X 2-1/4 GR2

Please contact your Morse dealer