

Lift and Dispense a Drum

>> [Click to Watch Video](#) <<

MADE
IN
USA

- You Control Lifting Height and Pouring Angle
- Removes Effort and Increases Productivity
- Power Lift and Tilt Options
- Heavy-Duty Hydraulics
- 360° Tilt Control in Either Direction
- Capacity: 800 Lb. (363 kg) full drum, 500 Lb. (227 kg) half-full* drum

A fully loaded drum is easily handled by one person with a Morse Hydra-Lift Karrier. Lift, move and control pouring of a 55-gallon (208 liter) drum weighing up to 800 Lb. (363 kg) with minimal physical effort. Handle a variety of drums by installing the correct accessories for your particular size and type of drum. Standard models are available with maximum pouring heights of 72" or 96" (1.83 or 2.44 m). Custom versions can be made for extra lift, more reach, greater straddle width, non-standard containers, etc.

You can raise and control dispensing as necessary. Increase pouring angle for full discharge, reduce to control the pour rate, or reverse to stop pouring and deliver partial drum contents.

Material is discharged straight forward directly from the drum. Faucets, pipe, valve extensions, etc. may be attached to the drum, but the ability to pour straight from the drum with variable lift and pour angles is an important difference from chute type dumpers.

Though often used for lifting and pouring, the Hydra-Lift Karrier can be used in various ways, such as lifting drums on or off scales, platforms, conveyors or trucks, moving drums to or from storage, charging high tanks and positioning drums of parts for hand access at work stations.



Model 400A-96SS-125
has 96" (2.44 m) dispensing height, battery power lift, and manual tilt

Each Hydra-Lift Karrier Features

Heavy-duty hydraulic ram with a built-in flow control for a uniform, controlled speed of descent with even the heaviest drum.

Welded rectangular type 304 stainless steel tube framework.

Easy maneuverability on two 8" (20.3 cm) durable polyolefin wheels and two 4" (10.2 cm) swivel casters hidden under the base.

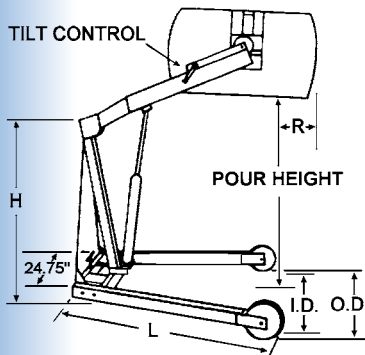
A step-down floor lock to help hold Hydra-Lift Karrier in place while you dispense from drum.

Frame is made of type 304 stainless steel. Frame is electropolished for a bright smooth finish. Welds are not ground or polished. Ratchet and pawl are not stainless steel, but are painted with "steel-it" epoxy. Gears, sprockets and chain are not stainless steel, but are covered with guards.

Manual-Lift Models have hydraulic hand pump with variable release valve for drum lift.

Manual-Tilt Models have covered tilt gears with 30:1 reduction to make pouring your drum simple and easy.

See power lift and power tilt options on side 2.



Model #	Max. Pouring Height	R	H	L	O.D.	I.D.	Tilt Control	Ship Weight
400A-72SS	72" (1.83 m)	6" (15 cm)	55" (140 cm)	60" (152 cm)	44" (112 cm)	37" (94 cm)	Chain Wheel	311 Lb. (141 kg)
400A-96SS	96" (2.44 m)	-4" (-10 cm)	69" (175 cm)	72.5" (184 cm)	49" (124 cm)	42" (107 cm)	Chain Wheel	379 Lb. (172 kg)
400S	Custom height, reach, straddle, capacity, non-standard drum, etc.							
Model numbers in this chart include hand pump hydraulic lift and manual drum tilt control. See available power options on side 2.								

NEW MORCINCH Drum Handling System

- Automatically adjusts for 22" to 23.5" (56 to 59.7 cm) diameter drum
- Accepts Diameter Adaptors for your smaller drum
- Accepts bolt-on Top Rim Clamp or Bracket Assembly to handle a plastic or fiber drum
- Includes a flexible cover on the cinch chain to help protect the sidewall of your drum
- Incorporates durable stress relief weld joints

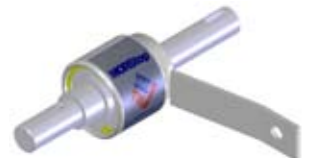


Manual Tilt Models have pull chain and chain wheel tilt control.



Manual Tilt Control Options

We recommend **Option # 3900iSS-P** factory installed MORStop Tilt-Brake to automatically hold tilt angle. MORStop Tilt-Brake is not stainless, but coated with "steel-it" epoxy paint.



Part # 3900SS-P MORStop Tilt-Brake Kit to field install behind the chain wheel, hand wheel or hand crank on your Heavy-Duty Hydra-Lift Karrier.

Option X01SS

Hand Crank with MORStop Tilt-Brake.



Option X02SS
Simple Hand Crank.

Option X03SS
16" (40.6 cm) Diameter Hand Wheel (not shown).

* Half-full rating is based on tilt mechanism's capacity for handling a bottom heavy drum. A partially full drum with unbalanced and shifting load is harder to tilt than a full drum.

Stainless Steel Hydra-Lift Karrier Model Numbers

Lift Height	AC Motor *** Power Lift and Tilt	Air Motor Power Lift & Tilt	12V DC ** Power Lift & Tilt	AC Motor *** Power Lift, Manual Tilt *	Air Motor Power Lift, Manual Tilt *	12V DC ** Power Lift, Manual Tilt *	Manual Lift & Manual Tilt *
72"	400A-72SS-110	400A-72SS-114	400A-72SS-115	400A-72SS-120	400A-72SS-124	400A-72SS-125	400A-72SS
96"	400A-96SS-110	400A-96SS-114	400A-96SS-115	400A-96SS-120	400A-96SS-124	400A-96SS-125	400A-96SS

* Manual tilt control is chain wheel and pull-chain.

** 12V DC power option includes battery and 110V AC charger.

*** Standard AC motors are 1HP, 115V, 60 Hz, TEFC. Explosion-proof motors and 50Hz motors are also available.

MADE
IN
USA

Power Options

Power-Lift Options

ease drum lifting, but retain manual tilt control. Models with 72" and 96" (1.8 and 2.4 m) lift heights have pull chain and chain wheel tilt control.

Power Option #	Motor Type	Motor Control	Ship Wt. Adder
120	AC, 1HP/115V, TEFC	Switch, Cord, Plug	40 Lb. (18 kg)
124	Air, Vane Type	On/Off Valve	25 Lb. (11 kg)
125	DC, 12V	Built-in	85 Lb. (39 kg)



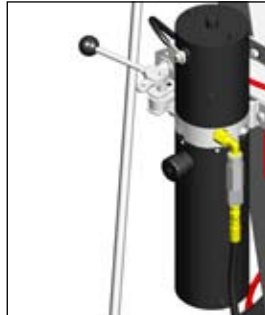
Electric Power Lift Option #120

Use switch to raise the drum. Lower the drum with manual release valve.



Air Motor Power Lift Option #124

Use on/off valve to raise the drum. Lower the drum with manual release valve.



Battery Power Lift Option #125

Self contained battery power-lift. Use valve to raise and lower the drum. Separate charger is included.

Power Lift & Tilt Options

make drum handling easier and faster. There are two hand valve controls: One for the power-lift function and a second for power-tilt.

Power Option #	Motor Type	Motor Control	Ship Wt. Adder
110	AC, 1HP/115V, TEFC	Switch, Cord, Plug	75 Lb. (34 kg)
114	Air, Vane Type	On/Off Valve	95 Lb. (43 kg)
115	DC, 12V	Built-in	120 Lb. (54 kg)



Electric Power Lift & Tilt Option #110

Hold momentary switch and lift valve to raise drum. Use second valve to control the hydraulically driven drum tilt. Lower the drum with manual release valve.



Air Power Lift and Tilt Option #114

Hold on/off valve and lift valve to raise the drum. Use a second valve to control the hydraulically driven drum tilt. Lower the drum with manual release valve.



Battery Power Lift and Tilt Option #115

Self contained battery power-lift. Hold momentary switch and lift valve to raise drum. Use second valve to control the hydraulically driven drum tilt. Lower the drum with manual release valve. Separate charger is included.

MORcinch Options

The MORcinch drum holder on Hydra-Lift Karriers is designed to handle a 55-gallon steel or fiber drum. It automatically adjusts from 22" to 23.5" (56 to 59.7 cm) in diameter. The cinch chain with pawl and ratchet mechanism is used to secure the drum in the holder.

To handle other drums, order one of the following:

The Bracket Assembly provides a brace at top and bottom of your drum to prevent it from slipping lengthways through the drum holder. The Bracket Assembly is required to handle a rimless plastic drum, and recommended to more securely handle a fiber drum. It adjusts for 31" to 39" (79 to 99 cm) tall drum.

Part # 4556SS-P Stainless Steel Bracket Assembly.



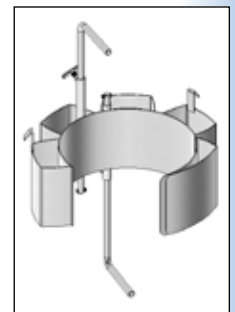
The Top Rim Clamp grips the upper rim of your drum to prevent it from slipping through the drum holder. Use to handle a 55-gallon (208 liter) rimmed plastic or fiber drum. To handle a 55-gallon plastic drum with top rim, you must install either the Bracket Assembly or the Top Rim Clamp.

Part # 4560SS-P Stainless Steel Rim Clamp Assembly.



Diameter Adaptors for a smaller diameter drum, fit inside the drum holder. They install easily without tools and are quickly removed.

Diameter Adaptors for 17.5" (44.5 cm) diameter or smaller have brackets at top and bottom of the drum. They adjust for a drum up to 38" (96.5 cm) tall.



DIAMETER ADAPTORS

STAINLESS STEEL DIAMETER ADAPTORS	FITS DIAMETER	SHIP WEIGHT
55/30SS-20.5	20" to 20.5" (50.8 to 52.1 cm)	23 Lb. (10.4 kg)
55/30SS-19	18.5" to 19" (47 to 48.3 cm)	24 Lb. (10.9 kg)
55/30SS-17.5	17" to 17.5" (43.2 to 44.5 cm)	35 Lb. (18.9 kg)
55/30SS-16	15.5" to 16" (39.4 to 40.6 cm)	35 Lb. (18.9 kg)
55/30SS-14.5	14" to 14.5" (35.6 to 36.8 cm)	36 Lb. (16.3 kg)

Model 400A-96SS-125

Has 96" (2.44 m) dispensing height, battery power lift, and manual drum tilt with pull chain tilt control.



Raise drum with ergonomic battery power drum lift. Models are available with battery, electric or air power drum lift . . . or choose a model with powered drum lift AND tilt (see chart at top of page 2).



Turn drum 360° in either direction with pull chain and chain wheel. Models are also available with battery, electric or air power drum tilt (see chart at top of page 2).

Model 400A-72SS-120

Has 72" (1.83 m) dispensing height, electric power lift, and drum manual tilt. It is shown here with Option X01SS: Hand Crank with MORStop Tilt-Brake.



Please contact your Morse dealer