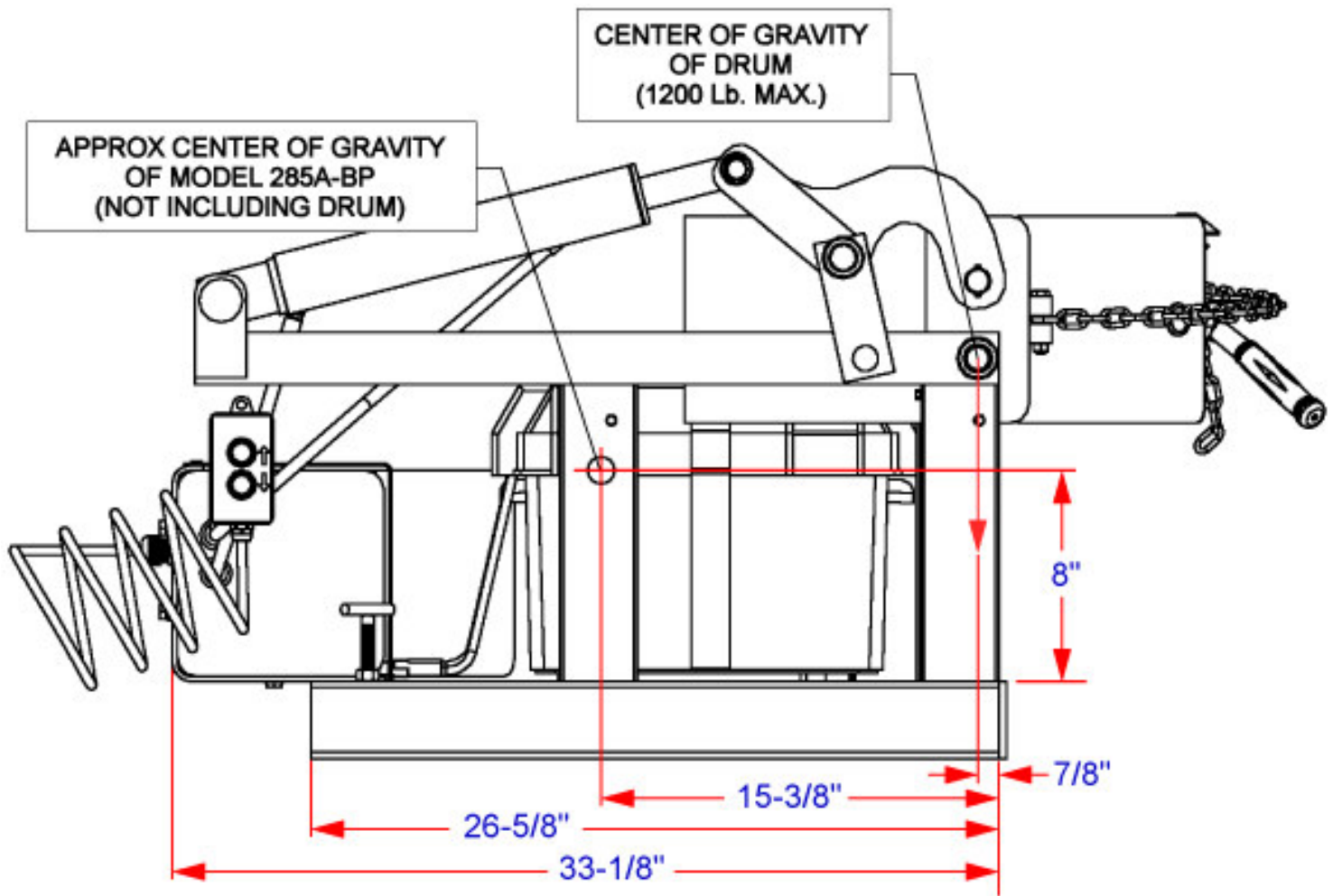


**LOST LOAD CAPACITY WITH MORSE MODEL 285A-BP
BATTERY POWERED FORK LIFT-KARRIER**

Serial # 1202 to ____ (MMYY)

CENTER OF GRAVITY DIMENSIONS FOR CALCULATING LOST LOAD ON EQUIPMENT



DIMENSIONS ARE MEASURED FROM INSIDE OF FORK TUBE END. THIS WILL GIVE A FIXED POINT TO WHICH LOST LOAD DATA CAN BE DETERMINED. (FORKS MUST BE TOUCHING THIS FORK TUBE END.)

MODEL: 285A-BP
NET WEIGHT: 295 Lb.