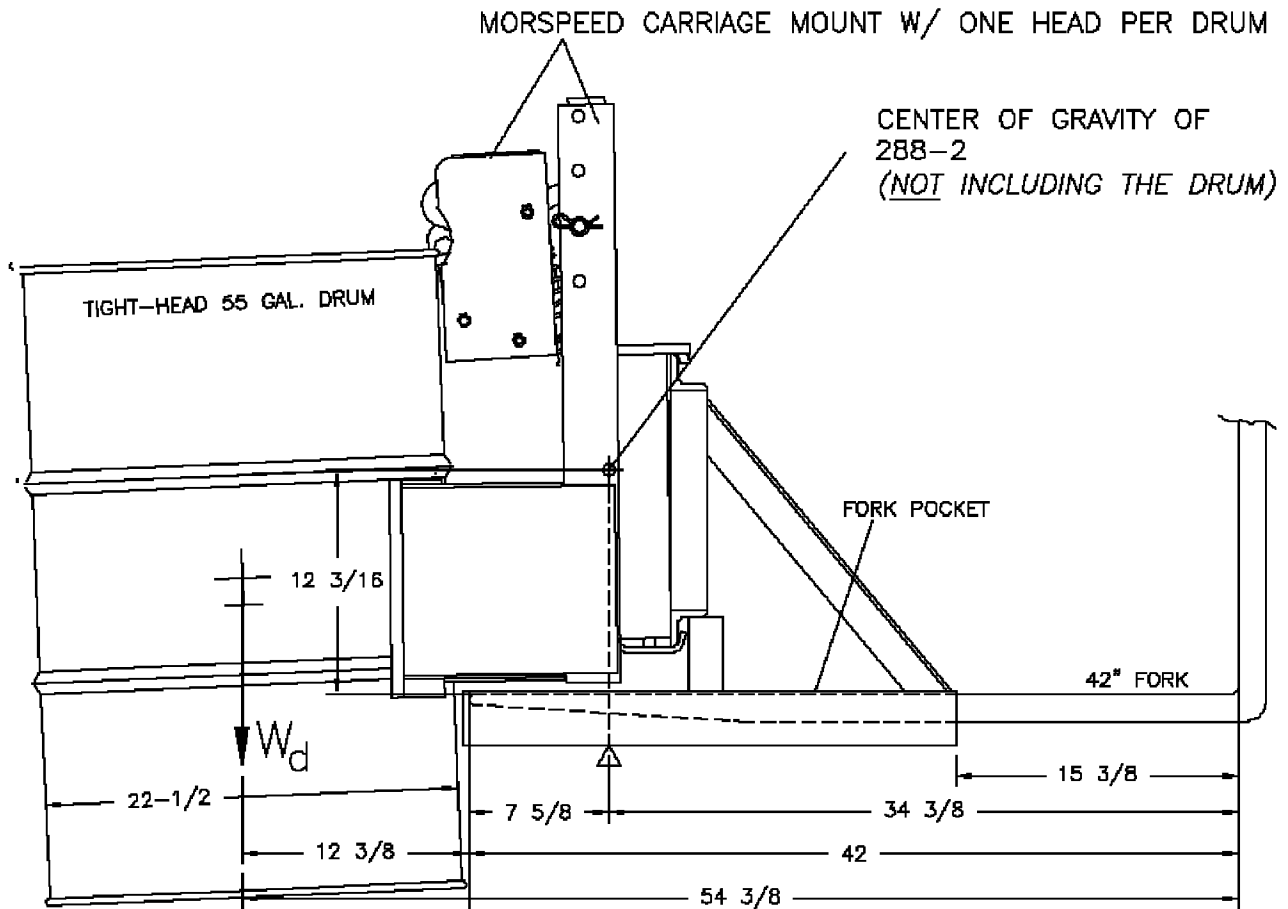


**LOST LOAD CAPACITY WITH  
MORSE MODEL 288-2 MORS*Speed* Fork Truck Attachment  
Serial Numbers 0301 to \_\_\_\_\_**

**CENTER OF GRAVITY DIMENSIONS FOR  
CALCULATING LOST LOAD ON LIFTING EQUIPMENT.**



DIMENSIONS ARE MEASURED FROM INSIDE OF FORK TUBE END. THIS WILL GIVE A FIXED POINT TO WHICH LOST LOAD DATA CAN BE DETERMINED. (FORKS MUST BE TOUCHING THIS FORK TUBE END.)

MODEL	NET WEIGHT	OPTION	ADD TO MODEL
288-2	369 LB.	(2) 2523-P	10 LB.

$W_d$  = WEIGHT OF DRUM  
MAX = 3000 LB. FOR 288-2