

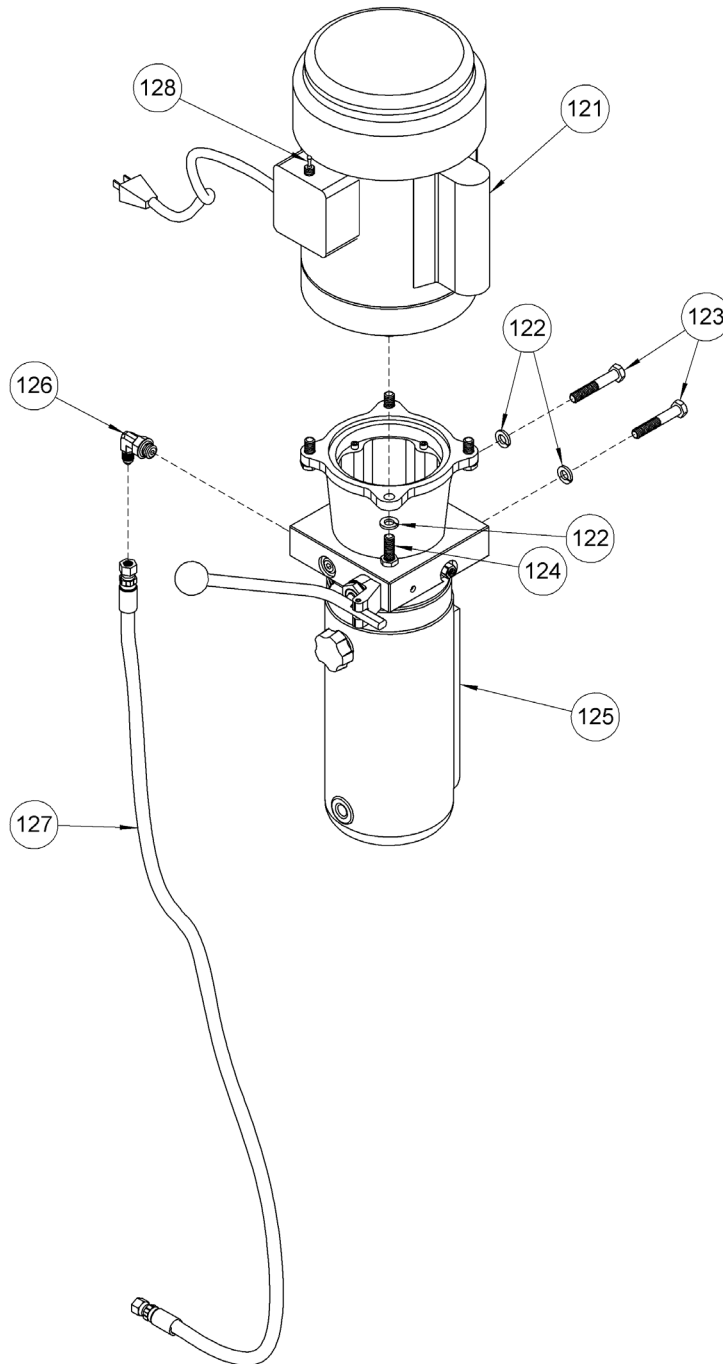
**Parts Diagram for AC Power Lift Components
Used on Morse Model 410-120 Heavy-Duty Hydra-Lift Karrier
with serial # 1210 to ____ (MMYY)**



**IMPORTANT
NOTE**

4-Digit serial numbers
are simply the month
& year of manufacture

Example: 0802 is
August 2002



| ITEM | QTY. | PART # | DESCRIPTION |
|------|------|--------|--------------------------------|
| 121 | 1 | 1062-P | MOTOR 1HP 1PH TEFC 56C W/ CORD |
| 122 | 6 | 1474-P | WASHER, 3/8 SPLIT LOCK |
| 123 | 2 | 82-P | HHCS, 3/8-16 X 2-1/4 GR2 |
| 124 | 4 | 1572-P | HHCS, 3/8-16 X 1 GR2 |

| ITEM | QTY. | PART # | DESCRIPTION |
|------|------|---------|--------------------------------|
| 125 | 1 | M4509-P | HYD POWER PACK, -120, -124 |
| 126 | 1 | 3610-P | HYD FIT, MALE ELBOW, SAE |
| 127 | 1 | 5180-P | HYD HOSE ASM, 28" |
| 128 | 1 | 3633-P | SWITCH, TOGGLE, MOMENTARY, 400 |