

**OWNER'S MANUAL FOR**  
**Morse Model 185XGR Super-Duty Kontrol-Karrier**  
**Serial Number 0108 to \_\_\_\_ (MMYY)**

**A. IMPORTANT:**

1. Review the Material Safety Data Sheet(s) for the material(s) in the drum(s) and take all necessary precautions. Safety shoes, work gloves, hard hat and other personal protective devices are recommended.
2. Please read all instructions *thoroughly* before attempting to operate your new MORSE drum handler.
3. The model 185XGR has a maximum capacity rating of 2,500 Lb. full drum and 1,250 Lb. half-full drum and is designed to lift, move and pour a 55 gallon steel drum. *DO NOT* exceed these ratings. Exceeding these ratings or handling drums other than those mentioned above is unsafe and could result in equipment damage, excessive wear or awkward handling.
4. When loading, unloading, operating, or maintaining your MORSE drum handler, always use care and good judgment. Maintain secure footing and a firm hold. Keep hands and loose clothing away from all moving parts. Never allow anyone to be below any part of a raised drum handler or drum. Read operating instructions and review the pictures in the sales brochure before operation.
5. The model 185XGR is a "Group 1 - Structural and Mechanical" Below-the-Hook Lifting Device which is covered by the American National Standard ANSI/ASME B30.20. The user should comply with all aspects of this standard.



**B. ASSEMBLY INSTRUCTIONS:**

1. Remove the following items from the small cardboard box packaged with the 185XGR: chain wheel, chain guide w/ pull chain, bushing, 3/16 square key (items 2-6).
2. Slide bushing (item 4) and chain guide w/ pull chain (items 3 and 5) onto speed reducer (item 7) input shaft with the chain guide facing outward as pictured in parts diagram.
3. Insert 3/16 square key (item 6) into the key way on the input shaft of the speed reducer. Slide the key up to the bushing.
4. While raising the pull chain up into a loop, slide the chain wheel onto shaft with the keyway in the chain wheel lined up with the square key. Lay the loop of pull chain into the pockets in the chain wheel. Tighten the two set screws on the hub of the chain wheel.
5. Remove the metal screw-plug on top of the speed reducer.
6. Look into the hole to verify oil is in the speed reducer.
7. Install the plastic vent-plug in place of the metal screw-plug to allow internal pressure to equalize with atmospheric pressure.
8. Prior to initial use, inspect all moving parts and test rotation of chain wheel and saddle assembly. Perform necessary load test, inspections, operator training, etc. as prescribed in the ANSI/ASME B30.20 standard.

**C. OPERATING INSTRUCTIONS:**

1. With Kontrol-Karrier standing on the floor, lower hoist and engage hoist hook into the lifting eye closest to the chain wheel.
2. Raise hoist to lift Kontrol-Karrier clear of floor and move it to the drum. (Kontrol-Karrier should hang plumb.)
3. Position Kontrol-Karrier at a height which aligns the saddle band with the center of the drum.
4. Open the toggle clamp by activating the release lever (item 25) and swing both hinge bands to the open position. Push the Kontrol-Karrier against the drum to surround the drum with the saddle band.
5. Close the two hinged bands around the drum and latch the toggle clamp to secure the drum.
6. Lower hoist hook until slack. Relocate hoist hook to lifting eye that is centered over drum.
7. Raise hoist and position the drum at the pouring station.
8. Pour the drum by pulling on the pull chain (item 5) and rotating the drum to a suitable pouring angle.
9. After pouring is completed, rotate the drum back to vertical position and lower hoist to return drum to floor. Relocate hoist hook to lifting eye closest to the chain wheel.
10. Remove the drum by activating the release lever and opening the toggle clamp. Swing both hinged bands open. Push the Kontrol-Karrier away from the drum.

**CAUTION:** DO NOT allow drum to impact on floor, ground, or dumping station, etc.  
**CAUTION:** DO NOT exceed weight capacity of 2,500 lb. for FULL drum, 1,250 lb. for HALF-FULL drum.

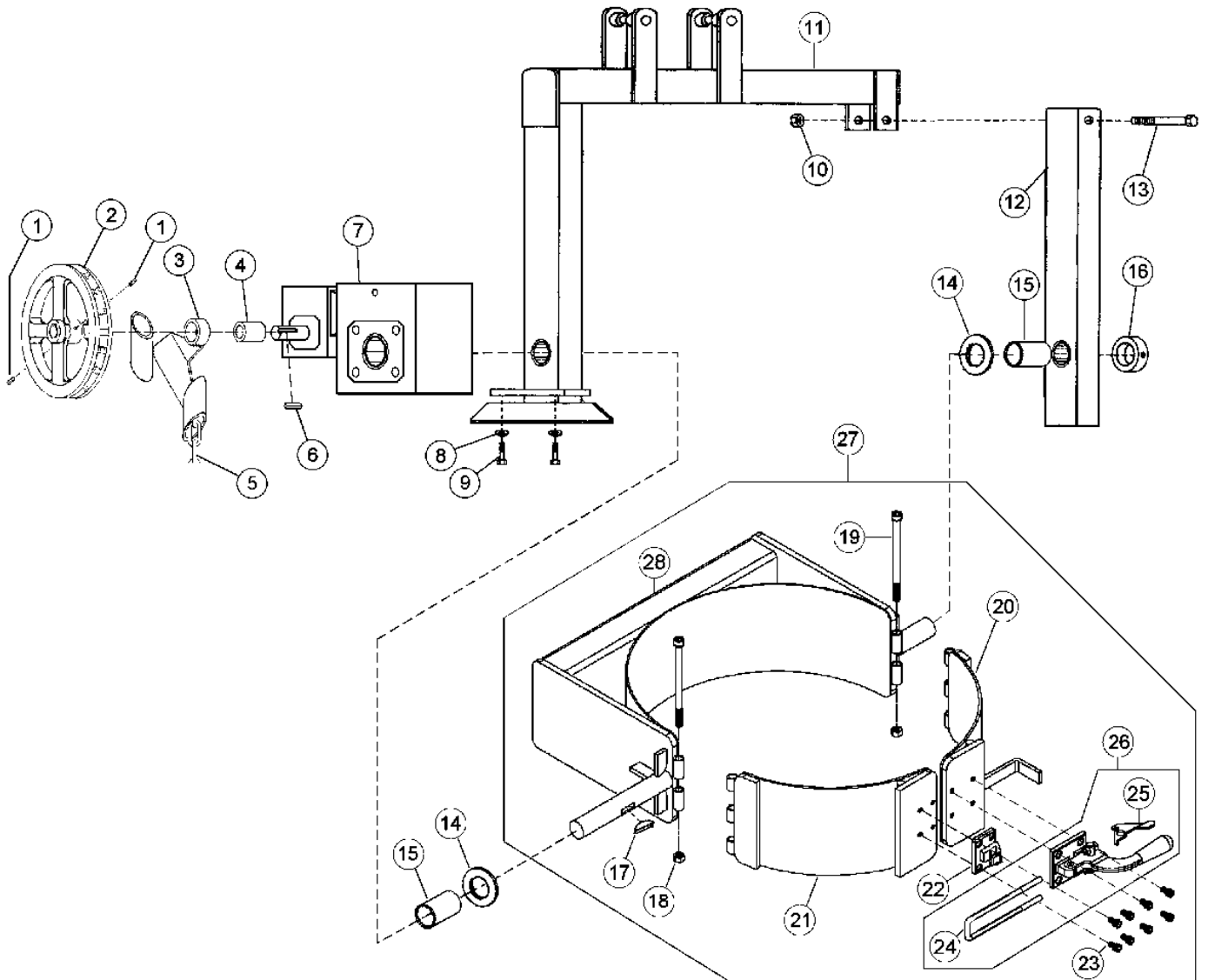
**Operator's Manual for Morse Model 185XGR Super-Duty Kontrol-Karrier**  
Serial number 0108 to \_\_\_\_ (MMYY)

**D. MAINTENANCE:**

1. Inspect oil level in gear box / speed reducer and fill with high quality, synthetic lubricant for gears if necessary. Use [Klubersynth UH1 6-460 \(#096060\)](#) or equivalent.
2. Periodically inspect all moving parts, framework, and contact areas for signs of wear, fatigue, or loosening. Perform all inspections, load tests, and maintenance according to the ANSI/ASME B30.20 standard.

ITEM	QTY.	PART #	DESCRIPTION
1	2	1000-P	SET SCREW, 1/4 - 20 X 1/4
2	1	1322-P	POCKET CHAIN WHEEL, 5/8 BORE
3	1	1304-P	GUIDE, POCKET CHAIN WHEEL
4	1	1324-P	BUSHING, 5/8 ID X 1" OD
5	1	3-185-P	PULL CHAIN, POCKET, 12' LENGTH
6	1	1326-P	KEY, SQUARE, 3/16 X 1"
7	1	603-P	SPEED REDUCER, 2 STAGE
8	2	1166-P	WASHER, 3/8 USS 1" OD
9	2	1502-P	7/16 - 14 X 1-1/4 HHCS GR 5
10	1	1473-P	5/8 - 11 REV HEX LOC NUT
11	1	3883-P	OVERHEAD WELD W/BRG, 185XGR
12	1	550-P	IDLER ARM W/ BEARING 185GR
13	1	565-P	5/8 - 11 X 4-1/2 HHCS GR 5 STL
14	2	540-P	1-1/2" SAE FL WASHER
15 *	2	560-P	BEARING, 1-1/2" ID X 2"
16	1	570-P	COLLAR, 1-1/2" ID
17	1	525-P	KEY, WOODRUFF, SIZE F, ASA1211
18	2	810-P	1/2 - 13 REV HEX LOC NUT
19	2	3592-P	1/2 -13 X 7-1/2" SHCS
20	1	4516-P	FRONT BAND WELD, CLAMP, XGR
21	1	4515-P	FRONT BAND WELD, CATCH, XGR
22	1	3067-P	CATCH, 375-R TOGGLE, CAMLOCK
23	8	22-P	3/8 - 24 x 5/8" SHCS
24	1	3227-P	U-BOLT, 375-R CLAMP, 8-5/8 GGR
25	1	3601-P	RELEASE LEVER, 2984-P
26 *	1	4187-P	TOGGLE CLAMP, W/ U BOLT
27 **	1	4511-P	SADDLE ASM, XGR, 3PC, 2500LB
28	1	4512-P	SADDLE WELD, XGR, 2500 LB. (NOT SOLD SEPARATELY)
* Recommended spare parts			
** "SADDLE ASM" (drum holder assembly) includes the "SADDLE WELDMENT" (item 28) and appropriate attached moving parts (items _____).			

Operator's Manual for Morse Model 185XGR Super-Duty Kontrol-Karrier  
Serial number 0108 to \_\_\_\_ (MMYY)



**For replacement parts, please contact your Morse dealer.**

**When ordering parts, please specify:**

- Part number and description,
- Model number
- Serial number

**Find model number and serial number on metal name plate attached to Extra Heavy-Duty Kontrol Karrier.**