

**CONTENTS**

	Page
Receiving Procedures. . . . .	1
Warranty. . . . .	1
Safety Information. . . . .	1 - 2
Machine Description. . . . .	2
Assembly Instructions. . . . .	3
Operating Instructions. . . . .	3
Maintenance. . . . .	3
Options and Accessories. . . . .	3
Parts Lists and Diagrams. . . . .	4 - 5

**Operator’s Manual**  
**for Morse Kontrol-Karrier**  
**with Spark Resistant Parts and**  
**Air Power Tilt**

**Model 195AM-A**  
with Serial Number 268439 to \_\_\_\_\_

**Receiving Procedures**

Every Morse drum handler is inspected prior to shipping. However, damage may be incurred during transit.

- Check for visible damage. If you choose to accept damaged freight, always sign noting the damage on the **Bill of Lading**.
- Document the damage and have the truck driver sign. We recommend keeping a digital camera at your receiving dock for this purpose.
- Open packages expeditiously to check the condition of the goods. There is only a 24 hour window to notify the carrier of any concealed damage.
- Immediately **report all damage to the shipping company!** Then you may contact Morse for assistance with your freight claim.
- Morse Manufacturing will not be held responsible for any damaged freight that is not signed for as damaged.

**Limited 2 Year Warranty**

Morse drum handling equipment is guaranteed against defects in workmanship or materials for two years when used properly within its rated capacity. Warranty does not cover wear from normal use or damage from accident or abuse. Motors and other purchased parts carry the warranties of their manufacturers.

For warranty claims, contact your Morse Dealer to obtain a return authorization number, and for return freight advice. Return freight must be prepaid.

In all instances, liability is limited to the purchase price paid or to repairing or replacing the product. Customer assumes liability for any modifications, unauthorized repairs or parts substitution.

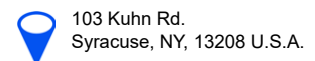
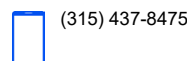
**Safety Information**

While Morse Manufacturing Co. drum handling equipment is engineered for safety and efficiency, a high degree of responsibility must be placed upon the machine operator to follow safe practices, based primarily on common sense, upon which true safety depends.

Failure to follow the safety precautions in this manual can result in personal injury or property damage. Observe the same precautions as with similar machinery where carelessness in operating or maintenance is hazardous to personnel. Carefully read the safety precautions below and throughout this manual.

Review the Material Safety Data Sheet(s) for the material(s) in the drum(s) and take all necessary precautions. Safety shoes, work gloves, hard hat and other personal protective devices are recommended.

Prior to initial use, inspect all moving parts and test rotation of chain wheel and saddle assembly. Inspect saddle assembly for proper operation. Perform necessary load test, inspections, operator training, etc.



### Operator's Manual for Morse Model 195AM-A

Serial Number 268439 to \_\_\_\_\_

### Safety Information (continued)



**DANGER** - Indicates a situation which, if not avoided, *will* result in serious injury or death. This signal word is limited to the most extreme situations.



**WARNING** - Indicates a situation which, if not avoided, *could* result in serious injury or death.



**CAUTION** - Indicates a situation which, if not avoided, can result in damage to the machine.



**WARNING**

The Kontrol-Karrier is designed to handle one drum of the types listed under **Machine Description**. *DO NOT* attempt to handle any other type of drum or object. *DO NOT* exceed the weight capacity of 1,500 Lb. full drum and 800 Lb. half-full drum.



**WARNING - Do Not Modify the Unit**

Under no circumstances should any modifications be made to the Morse machinery without factory authorization. Any modifications may void the warranty. This machine was designed to perform a specific job and alterations may result in injury to operator or machine.



**WARNING - No Loose Fitting Clothing**

Wear close-fitting clothing and safety equipment appropriate to the job. Loose fitting clothing may become caught on the machinery and cause severe personal injury.



**WARNING - Wear Safety Shoes**

Wear safety shoes with non-slip soles and hard toe protection.



**WARNING - Watch Out for Pinch Points**

Stay clear of moving parts.



**CAUTION - DO NOT allow drum to impact on floor, ground, or dumping station, etc.**



**WARNING:** This product can expose you to chemicals including barium sulfate, cobalt, titanium dioxide, and 2-methylimidazole, which are known to the State of California to cause cancer, and bisphenol-A, which is known to the State of California to cause birth defects or other reproductive harm.

For more information go to [www.P65Warnings.ca.gov](http://www.P65Warnings.ca.gov)

MORSE  
Mfg. Co., Inc.  
E. Syracuse, NY

The Specialist  
in Drum  
Handling  
Equipment

**1500 Lb.**  
( 680 kg ) **Max.**  
Capacity

Made in U.S.A.

**Operator's Manual for Morse Model 195AM-A**  
**Serial Number 268439 to \_\_\_\_\_**

**Important**

1. Review the Material Safety Data Sheet(s) for the material(s) in the drum(s) and take all necessary precautions. Safety shoes, work gloves, hard hat and other personal protective devices are recommended.
2. Please read all instructions *thoroughly* before attempting to operate your new MORSE drum handler.

**Machine Description**

1. The model 195AM-A has a maximum capacity rating of 1,500 Lb. full drum and 800 Lb. half-full drum and is designed to lift, move and pour *55-gallon steel drums*. *DO NOT* exceed these ratings. Exceeding these ratings or handling drums other than those mentioned above is unsafe and could result in equipment damage, excessive wear or awkward handling.
2. The model 195AM-A is a "Group 1 - Structural and Mechanical" Below-the-Hook Lifting Device which is covered by the American National Standard ANSI/ASME B30.20. The user should comply with all aspects of this standard.
3. When loading, unloading, operating, or maintaining your MORSE drum handler, always use care and good judgment. Maintain secure footing and a firm hold. Keep hands and loose clothing away from all moving parts. Never allow anyone to be below any part of a raised drum handler or drum. Read operating instructions and review the pictures in the sales brochure before operation.

**Assembly Instructions**

1. Install speed reducer oil vent plug and check oil level as shown in the speed reducer owners manual.
2. Air motor requires 20 PSI at 22 SCFM. Operating the air motor at higher pressures will reduce the life of the air motor and power transmission components.
3. Prior to initial use, inspect all moving parts and test rotation of saddle assembly. Inspect saddle assembly for proper operation. Perform necessary load test, inspections, operator training, etc. as prescribed in the ANSI/ASME B30.20 standard.

**Operating Instructions**

1. With Kontrol-Karrier standing on the floor, lower hoist and engage hoist hook into the lifting eye.
2. Raise hoist to lift Kontrol-Karrier clear of floor and move it to the drum.
3. Position Kontrol-Karrier at a height which aligns the saddle band with the center of the drum.
4. Open the toggle clamp by activating the release lever (item \_\_\_) and swing both hinge bands to open position. Push Kontrol-Karrier against the drum to surround the drum with the saddle band.
5. Close the two hinge bands around the drum and latch the toggle clamp to secure the drum.
6. Raise hoist and position the drum at the pouring station.
7. Pour the drum by pulling lever clockwise on the control valve (item 3).
8. After pouring is completed, rotate the drum back to vertical position and lower hoist to return drum to floor.
9. Remove the drum by activating the release lever and opening the toggle clamp. Swing both hinge bands open.

**Maintenance**

1. Inspect oil level in speed reducer.
2. Periodically inspect all moving parts, framework and contact areas for signs of wear, fatigue, or loosening. Perform all inspections, load tests, and maintenance according to the ANSI/ASME B30.20 standard.
3. Ensure all labels are in place. Product labels should be inspected periodically and cleaned as necessary to maintain good legibility. Please contact Morse Mfg. Co. for replacement labels.



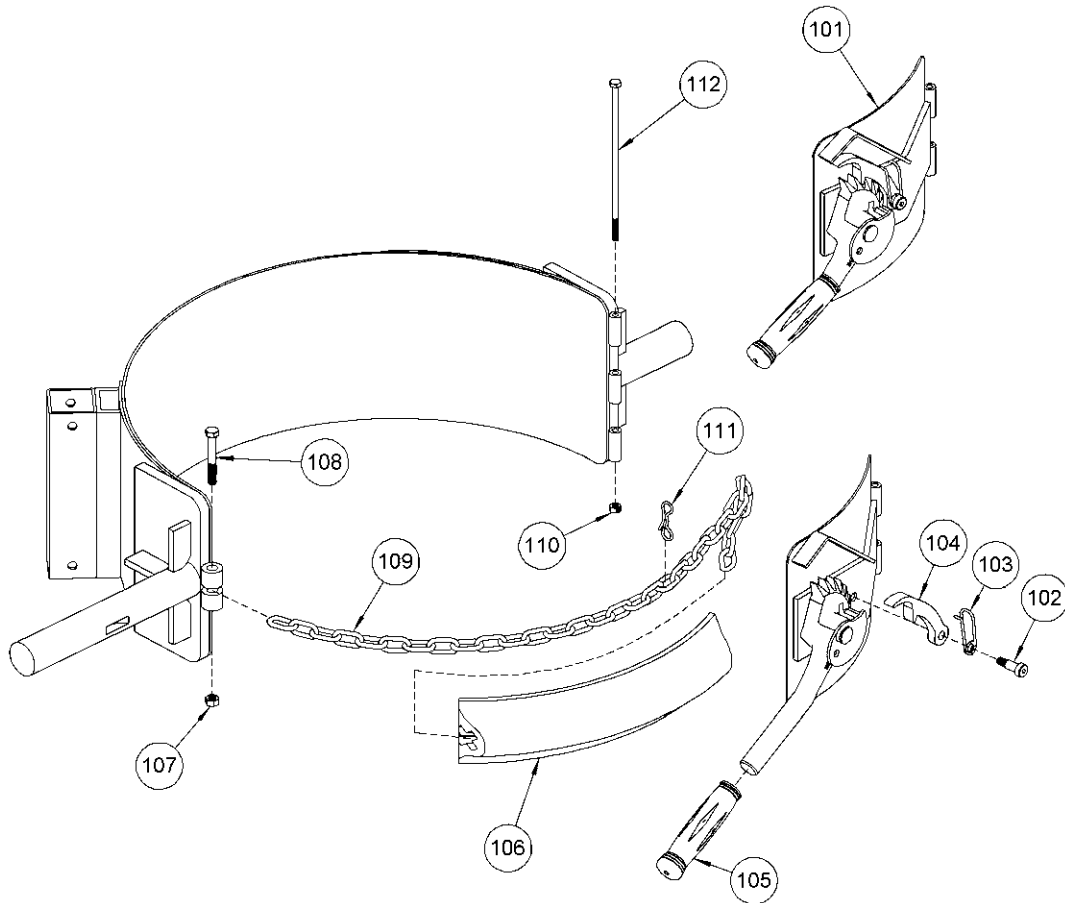
*The Specialist In Drum Handling Equipment*

## Model 195AM-A

**Kontrol-Karrier with Spark Resistant Parts  
and Air Power Tilt**

**Operator's Manual for Morse Model 195AM-A**  
**Serial Number 268439 to \_\_\_\_\_**

**Operator's Manual for Morse Model 195AM-A**  
**Serial Number 268439 to \_\_\_\_\_**



ITEM #	QTY.	PART #	DESCRIPTION
101*	1	727AM-P	HINGE PLATE CPT, 1/4" SR
102	1	170-P	SCREW, 3/8 DIA X 5/8 SHOULDER
103	1	169-P	SPRING, PAWL
104	1	168-P	PAWL, WITH DRILLED HOLE
105	1	4409-P	GRIP, HANDLE 7/8" X 4-3/4" RED
106*	1	4414-P	COVER, CINCH CHAIN, FLEX PVC
107*	1	4081-P	NUT, M8 ESNA, 8MM
108*	1	4079-P	HHCS, M8 X 60 MM CL8.8, 8MM
109*	1	4408-P	CHAIN, CINCH, 9/32, 38 LINK
110*	1	1297-P	NUT, 1/4-20 REV HEX LOCK
111	1	4710-P	PIN, BOW TIE COTTER, MOR
112*	1	1296-P	HHCS, 1/4-20 X 7-1/2 GR5
* Recommended spare parts			