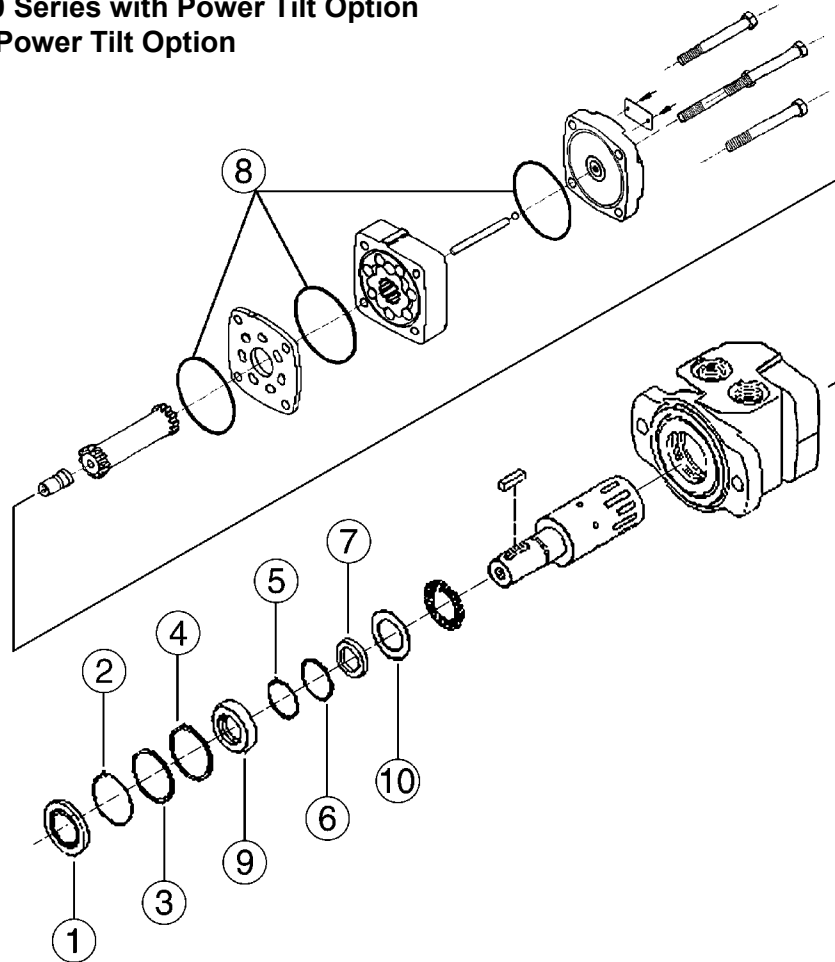


Parts List and Diagram for Morse Part # 351-P Hydraulic Motor

Used on:

- 400, 405 and 500 Series with Power Tilt Option
- 410 Series with Power Tilt Option
- 456 Series



ITEM	QTY.	DESCRIPTION
1	1	DUST SEAL
2	1	SPLIT WIRE RING
3	1	METAL BACKUP SHIM
4	1	HIGH PRESSURE SEAL
5	1	METAL BACKUP SHIM
6	1	TEFLON BACKUP SEAL
7	1	SHAFT SEAL
8	3	BODY SEALS
9	1	SEAL CARRIER
10	1	THRUST WASHER

Note: The above ten parts are available as a kit, Morse part number PS222001-P. Individual parts cannot be purchased separately.