

**Operator's Manual for Morse Model 92-30SS
 with Serial Number 1017 to ____ (MMYY)**

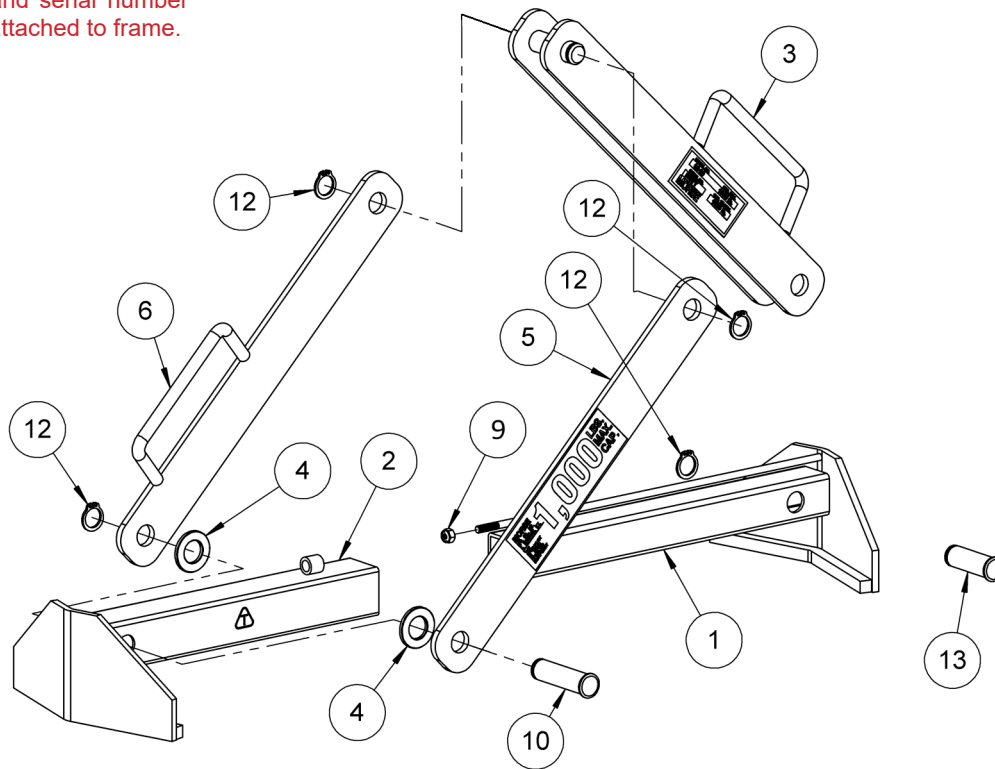
Drum Lifter for 15" to 23" Diameter Rimmed Drum

For replacement parts, please contact your Morse dealer.

When ordering parts, please specify:

- Part number and description
- Model number
- Serial number

Find model number and serial number on metal name plate attached to frame.



ITEM	QTY.	PART #	DESCRIPTION
1	1	3286SS-P	WELD, SMALL TUBE, 92-30, SS
2	1	3285SS-P	WELD, LARGE TUBE, 92-30, SS
3	1	5588SS-P	DOUBLE LINK WELD, 92-SS
4	2	55SS-P	WASHER, 3/4 SAE FL 1-1/2 OD SS
5	1	1429SS-P	LINK, 92-SS
6	1	1440SS-P	LINK WELD W/ HANDLE, 92-SS
9	1	4250-P	NUT, 1/4-28 NYLON LOCK
10	1	5585SS-P	PIN, GROOVE, 3/4 X 2.61 C SS
12	1	5330SS-P	SNAP RING, EXT, SS, 3/4"
13	1	5586LSS-P	PIN, GROOVE, 3/4 X 2.18 C SS