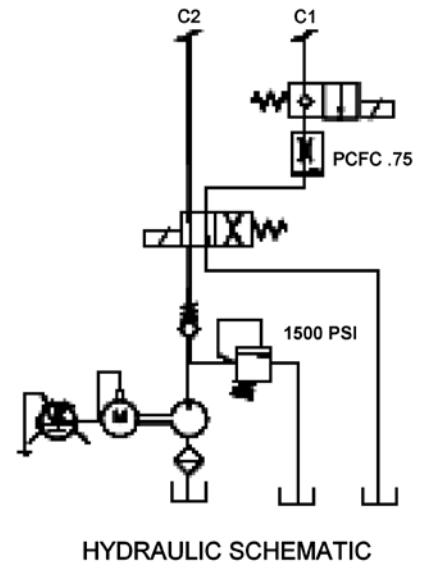
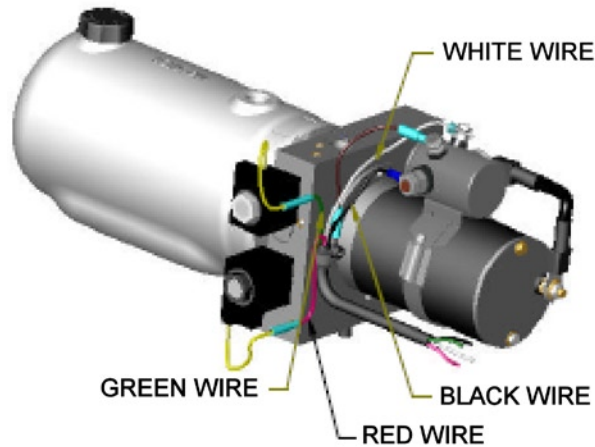


### Parts List and Diagram for Morse Part # M3551-P Used on Morse model 285A-BP with Serial number 0108 to \_\_\_\_ (MMYY)

**IMPORTANT NOTE**

4-Digit serial numbers are simply the month & year of manufacture

Example: 0802 is August 2002



ITEM	QTY.	PART #	DESCRIPTION
1	1	M12791-P	BASE ASM, M3551, MOD, 3" MTR
2	1	M01723-.75-P	POPPET ASM, PCFC, .75GPM 780-P
3	1	M07193-D-P	CARTRIDGE, 2W/2P, NC, POPPET
4	1	M00455-D-P	CARTRIDGE, 4W/2P, #8, 1/2" STEM
6	1	M08053-P	MOTOR, 12V DC, M642
7	1	M12637-150-P	PUMP ASM, GEAR CODE 150, M3551
8	2	M17018-P	PIN, DOWEL, 1/4 X 3/4, M3551
9	1	M17121-P	SHAFT, INTERMED, MICRO, DC
10	4	M07763-P	SHCS, 1/4-20 X 1-1/4
11	1	M01209-P	TUBE, FILTER SUCTION, DC
12	1	M01203-P	TUBE, RETURN, 1/8 NPTF, M3551
13	1	M01134-P	FILTER SCREEN, SUCTION MON
14	1	M06103-P	RESERVOIR, PLASTIC, 4.5 X 10
15	1	M07900-P	CLAMP, HOSE, WORM GEAR, RSV
16	1	M03171-P	PLUG, BREATHER, 3/8 NPT
17	1	M03335-P	SWITCH, SOLENOID 12VDC 4 POST
18	1	M07892-P	CLAMP, HOSE, WORM, 2.31-3.25
19	1	M07551-07-P	WIRE ASM, CONTROL, 16 AWG, HS
20	1	M07965-P	CABLE, INSULATED W/ LUGS, 6"
22	1	3240-P	PENDANT, 2 BUTTON, BP
23	1	M07747-P	SHCS, 1/4-20 X 3/4, MON

### Parts List and Diagram for Morse Part \$ M3551-P

Used on Morse model 285A-BP with Serial number 0108 to \_\_\_\_ (MMYY)

#### NOTES:

1. SPECIFICATIONS:
  - A. DISPLACEMENT  
0.032 CU IN/REV
  - B. UNLESS OTHERWISE SPECIFIED:  
RELIEF VALVE FACTORY SET AT:  
1500 PSI
2. RELIEF VALVE ADJUSTMENT:
  - A. LOOSEN JAM NUT
  - B. ADJUST PRESSURE
    1. TURN SCREW CLOCKWISE TO INCREASE PRESSURE
    2. TURN SCREW COUNTER CLOCKWISE TO DECREASE PRESSURE

NOTE: OUTLET PORT (PRESSURE) FLOW MUST BE BLOCKED TO MAKE RELIEF VALVE OPERATE WHILE ADJUSTING

