

PARTS LIST FOR PART # 603-P
2 STAGE SPEED REDUCER from Boston Gear
Used on Morse 285GR Series Serial Number 0798 to _____ (MMYY)

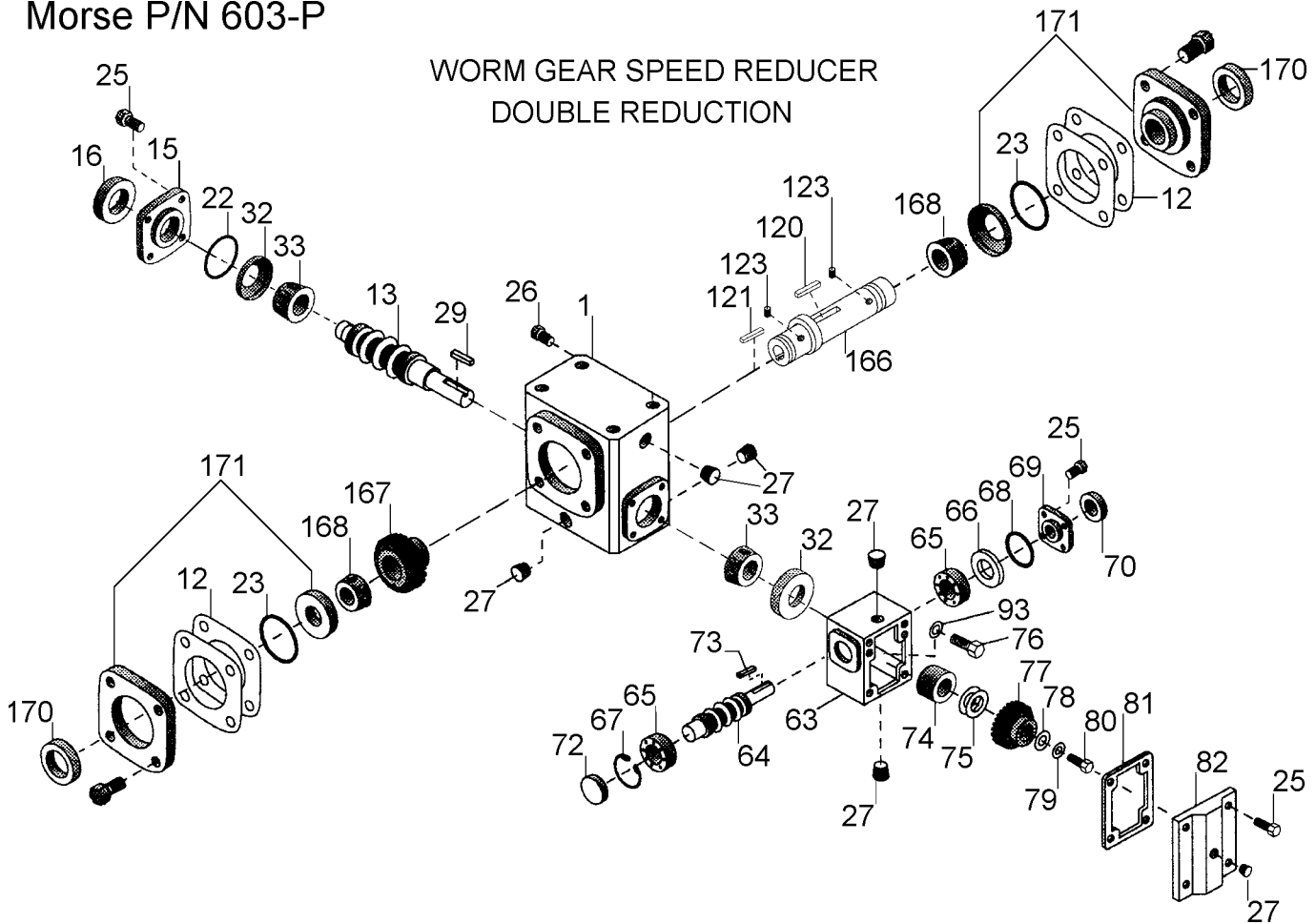
PARTS LIST FOR 603-P DOUBLE REDUCTION GEAR BOX			
ITEM #	QTY	P/N	DESCRIPTION
1	1	51000-P	HOUSING, 30:1, BOS 603-P
12	14	55995-P	SHIM, O/P, BOS 603-P
13	1	81800-P	WORM SHAFT, INTER BOS 603-P
15	1	51389-P	RETAINER, BOS 603-P
16	1	55478-P	OIL SEAL, 1-1/8" ID BOS 603-P
22	2	51487-P	O-RING, 2.3 X .103, BOS 603-P
23	2	51488-P	O-RING, 5.359 X .139 BOS 603-P
25	26	26218-P	HHCS, 5/16-18 X 3/4 BOS 603-P
26	1	46929-P	VENT, 3/8, BOS 603-P
27	7	26328-P	PIPE PLUG, 3/8, BOS 603-P
29	1	25724-P	KEY, .188 SQ X 1, BOS 603-P
32	2	68084-P	CUP, BOS 603-P
33	2	68085-P	BRG CONE, BOS 603-P
63	1	51008-P	HOUSING, PRIMARY 5:1 BOS 603-P
64	1	51264-P	INPUT WORM SHAFT, BOS 603-P
65	2	67323-P	BALL, BOS 603-P
66	9	55481-P	SHIM, STEEL, .003, BOS 603-P
67	1	56486-P	RING, RETAINER, BOS 603-P
68	1	51479-P	O-RING, 1.799 X .103 BOS 603-P
69	1	51386-P	RETAINER, BOS 603-P
70	1	27186-P	INPUT OIL SEAL, BOS 603-P
72	1	56554-P	BORE PLUG, BOS 603-P
73	1	51334-P	KEY, INPUT WORM SHAFT BOS 603-
74	1	51393-P	INTER SPACER, BOS 603-P
75	10	56010-P	SHIM, ALUM, .003, BOS 603-P
76	4	26678-P	HHCS, 5/16-18 X 1, BOS 603-P
77	1	51101-P	WORM GEAR, INTER, BOS 603-P
78	1	23114-P	WASHER, INTER SHAFT, BOS 603-P
79	1	26730-P	WASHER, LOCK, 3/8 BOS 603-P
80	1	51351-P	HHCS, 3/8-24 X 1, BOS 603-P
81	1	56007-P	COVER GASKET, BOS 603-P
82	1	55980-P	HOUSING COVER, BOS 603-P
93	4	51432-P	WASHER, NYLON ROLLED BOS 603-P
120	1	25814-P	KEY, .375 SQ X 2, BOS 603-P
121	1	25804-P	KEY, OUTPUT, BOS 603-P
123	6	65736-P	SET SCREW, BOS 603-P
166	1	13933-P	OUTPUT SHAFT, 1-1/2" BOS 603-P
167	1	81798-P	WORM GEAR, OUTPUT BOS 603-P
168	2	06398-P	BRG CONE, BOS 603-P
170	2	50885-P	OUTPUT OIL SEAL, BOS 603-P
171	2	14427-P	OUTPUT BRG CARRIER, BOS 603-P

PARTS DIAGRAM FOR PART # 603-P

2 STAGE SPEED REDUCER from Boston Gear

Used on Morse 285GR Series Serial Number 0798 to _____ (MMYY)

Morse P/N 603-P



For replacement parts, please contact your Morse dealer.

When ordering parts, please specify:

- Part number and description,
- Model number
- Serial number

Find model number and serial number on metal name plate attached to frame.